



SAFETY COVERS



Like having a full-time
LIFEGUARD
for your pool.

Scan this QR Code
to learn about GLLI
Safety Covers.



The GLI Difference.

WHY BUY GLI?

At GLI Pool Products, it is our mission to BRING FAMILIES TOGETHER and KEEP THEM SAFE. A new safety cover is the first step to creating a safe backyard during the off-season. From our family to yours, you can trust that every safety cover is built to ASTM Standards, with superior craftsmanship and industry best shipping lead times.

THE IMPORTANCE OF ASTM STANDARDS

ASTM, the American Society for Testing and Materials, is an internationally recognized organization that develops technical standards for various materials, products, systems, and services. ASTM certifications are used worldwide to ensure product quality and safety. Recognizing the importance of these safety standards, all of GLI's safety covers undergo rigorous testing and compliance to ensure they are manufactured to meet or exceed ASTM F 1346-91.

WINTER COVER VS SAFETY COVER

Your standard Winter Cover is no more than a tarp held down with water tubes, providing little to no protection from accidental intrusion of children or stray animals.

A GLI Safety Cover is a safe solution for any homeowner. Not only will your backyard look great, but installation is easy and the "Peace of Mind" that you will carry throughout the winter months is well worth the investment.

**LIGHTWEIGHT
COVERS**
FOR EASY
REMOVAL &
INSTALLATION

**PUNCTURE
RESISTANT**
PROTECTION
FROM OUTSIDE
ELEMENTS

**INTRUSION
PROTECTION**
A SAFE OFF-SEASON
FOR CHILDREN, PETS
& WILDLIFE





Max Shade Mesh™ Safety Cover

Designed to be stronger and more reliable, and it will protect your pool against the most demanding conditions:



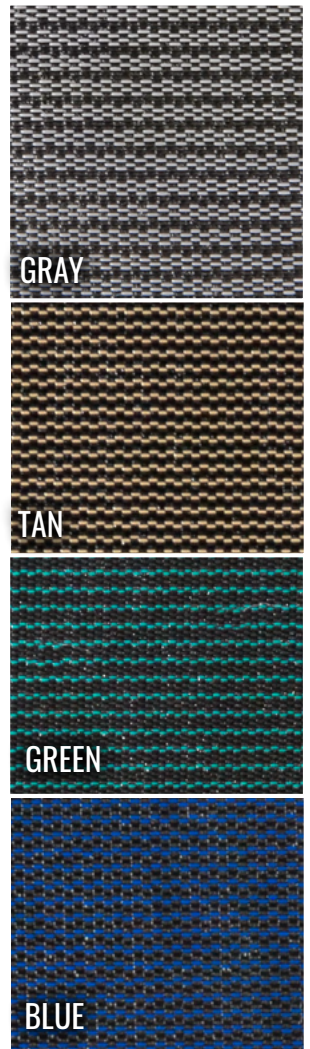
- Cover Type: Mesh
- Nearly 100% sunlight blockage, 8 oz weight
- 25-year warranty with 5-year full coverage and 20-year prorated coverage against manufacturer defects
- Engineered for maximum protection
- Equipped with heavy-duty suspension
- Allows water through for drainage and safety while keeping sunlight and debris out



ProMesh® Safety Cover

If you open your pool in mid-spring and are looking for the benefits of a solid safety cover without the weight associated with it - this is the cover for you!

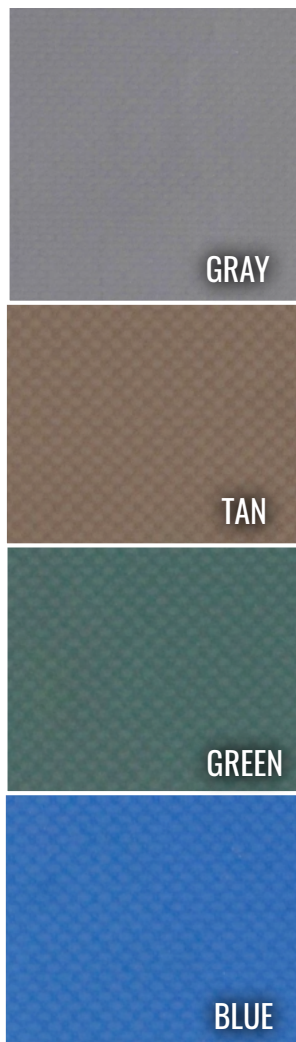
- Made from a unique weave of polypropylene mesh that blocks out algae producing UV Rays. Keeping sunlight out ensures that you will open to cleaner water in the spring.
- Secures pool from children, pets and stray animals.
- Nearly 50% lighter than solid covers for easier installation, removal and storage.
- Nearly 75% more tensile strength than competitor's standard mesh!
- Custom ProMesh Covers comes standard with Commercial Grade Springs - A \$125 value!
- 20 Year Limited Warranty with 5 year full coverage.
- Meets or exceeds ASTM standards - as set forth in ASTM F 1346-91.



HyPerLite™ Solid Safety Cover

If you open your pool in the late spring, have large amounts of leaves and debris in the yard and require the strongest and lightest solid safety cover available - this is the cover for you!

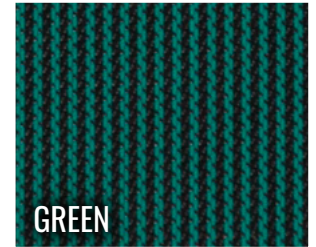
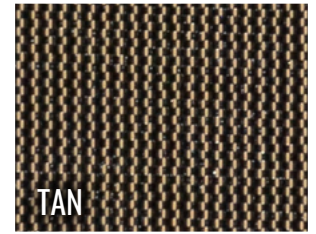
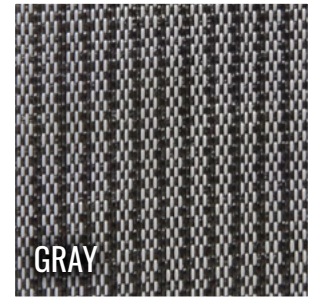
- PVC coated polyester fabric is 30% lighter than standard solid covers.
- 50% more puncture resistant!
- 100% Sunlight Blockage - NO spring time algae growth.
- Comes with patented "Kleen-Screen" drain (drains water from surface filtering out dirt, leaves and debris)
- Secures pool from children, pets and stray animals.
- Also available with Sure-Flo™ full length drain! Pump is available in lieu of drain.
- Custom HyPerLite Covers come standard with Commercial Grade Springs - A \$125 value!
- 15 Year Limited Warranty with 3 year full coverage.
- Meets or exceeds ASTM standards - as set forth in ASTM F 1346-91.



Secur-A-Pool® Mesh Safety Cover

If you open early in the spring, don't have large amounts of leaves and debris in your yard, or you don't fully winterize your pool but need the security of a safety cover - this is the cover for you!

- New and improved - increased weave count for added strength & shading.
- Light weight Polypropylene Mesh for easy installation and removal.
- Mesh material eliminates standing water hazard by allowing water and melting snow to drain through.
- Screens out dirt and debris for easy spring time opening.
- Tamperproof design prevents entry without installation rod - installs and removes in minutes.
- Improves the look of your pool in the off season.
- Secures pool from children, pets and stray animals.
- 15 Year Limited Warranty with 3 year full coverage.
- Meets or exceeds ASTM standards - as set forth in ASTM F 1346-91.



Solutions Provided



■ GLI has the solution for everything. With standard pools being a thing of the past, GLI has crafted solutions like wall mount anchors to make covering even the oddest shapes and edges possible.

■ **SECUR-A-GAP™** (shown above) provides your cover with the perfect fit around protruding pool elements such as rock features and waterfalls without the loss of security that your safety cover provides.



Application Innovation



■ **REDUCED DECK MOUNT SYSTEM** - Limited deck space available? GLI's Reduced Deck Mount System (RDM) utilizes a patented design that allows for the use of full-sized springs to provide proper tension to your safety cover. Our RDM system is another addition to our vast portfolio of safety cover applications to fit your custom needs.



■ **SECUR-A-GAP** - Every raised wall applicaiton comes complete with stainless steel cable, turnbuckle, and cable mate wall anchors to aid in the installation and removal of your Safety Cover.



■ **CUSTOM WEDGES** - Steps and other features can leave exposed areas under the Safety Cover that can be accessible to debris and accidental intrusion. For these applications, GLI can provide custom wedges that will fit into place under the cover and provide an additional barrier of protection.



■ All GLI safety covers are constructed with heavy duty polypropylene webbing and UV treated polyester thread to create the strongest safety covers in the marketplace. Strong enough to support the accidental intrusion of a child (shown above), stray animal, or even a large car (see cover).

Solid Cover Drain Options



■ **SURE-FLO™ FULL LENGTH DRAIN** - The Sure-Flo™ drain is created using ProMesh fabric that runs the full length of the pool, down the center of the cover, increasing the surface drainage area while blocking sunlight, dirt and debris from getting into your pool. The “Sure-Flo” drain option is ideal for custom shape pools or larger rectangles.

PUMP AVAILABLE

■ Prefer a pump in lieu of a drain? GLI offers pumps as an alternative to our Sure-Flo™ & Kleen-Screen® Drain systems.



■ **KLEEN-SCREEN® DRAIN** -The patented Kleen-Screen® drain filters dirt particles (as small as talcum powder) and still allows water to drain through, ensuring a safe pool in the off season and a CLEAN pool on opening day! Comes standard with Solid Safety Covers.

Material Specifications

MAX SHADE MESH: The most premium mesh safety cover fabric available on the market today. Our exclusive 8oz polypropylene-extruded mesh material offers the highest level of shade factor, abrasion resistance and burst strength available. Designed to protect your family and pool through the most demanding of environments.

HYPERLITE SOLID: 11 oz/yd² knife coated vinyl built with an exotic and high-performance formula that is designed to provide maximum tear strength and excellent resistance to abrasion, chlorine, aging due to UV exposure, and mildew/fungus. This maximum strength fabric features a woven ripstop scrim, and due to its composite construction, maintains a lighter weight than conventional laminate solid fabrics.

PROMESH: Our exclusive polypropylene-extruded double-layer weave mesh material has been designed to provide maximum shade and high water flow. This proprietary material has greater tear strength, abrasion resistance, and burst strength, than standard mesh materials. Monofilament in the warp and combination of mono/fibrillated tape in fill direction enhances the UV properties of this material which weighs 6.5 oz. per square yard and achieves nearly 100% sunlight blockage.

SECUR-A-POOL MESH: GLI's Secur-A-Pool mesh is constructed utilizing a monofilament fabric that is extruded using virgin resins along with yarns with the highest grade UV stabilization packages available. This time-tested fabric has been engineered to deliver high tensile and abrasion resistance properties for years of trouble-free protection.

WEBBING: 1” wide black polypropylene webbing with a minimum break strength of 2,400 points per single layer. The entire perimeter, 24” underneath, and every tail coming off of the cover’s edge utilizes double reinforced webbing for maximum strength, safety and abrasion resistance.

CHAFING STRAPS: 1” wide by 24” long. GLI's chafing straps are made of 100% PVC material and are sewn onto the underside of every Safety Cover strap. Each location is specifically chosen to aid in the protection and longevity of the cover.

THREAD: Dabond is a bonded, twisted continuous filament polyester thread. Combining superior sewing performance with excellent UV and abrasion protection, Dabond is specifically designed to provide resistance against harsh weather making it an excellent thread for outdoor use. GLI uses black thread exclusively due to its inherent resistance to UV rays, and triple stitches every panel join for maximum strength.

STANDARD & COMMERCIAL SPRINGS: 304 Stainless Steel dual draw bar compression type spring, designed with a special taper at both ends to help keep the cover and spring flush with the deck surface. GLI's special knurled ring attachment eliminates the need for “buckle” attachment and greatly reduces webbing slippage. Every spring includes a vinyl protector with patented pin-lock design to prevent them from falling off of the spring during installation/removal. Commercial grade springs utilize a 25% larger wire for increased load capacities.

Hardware & Accessories



■ 2" STAINLESS STEEL CABLEMATE WITH DROP-IN ANCHOR

GLI's default option for raised wall attachment. Simplifies the installation and removal of Safety Covers with raised wall applications. Designed with a machined profile that accommodates the supplied stainless steel aircraft cable. The stainless steel end can be unscrewed and stored when the pool is opened for the season, offering an aesthetic upgrade to traditional eyebolts.

■ 6" STAINLESS STEEL CABLEMATE WITH DROP-IN ANCHOR

This optional 6" drop-in anchor offers the same benefits as our standard 2" version, however the longer anchor body can provide better security when drilling into raised walls that have stone veneer facing.

■ STAINLESS STEEL FLUSH MOUNT WALL ANCHOR

This optional upgrade allows the machined head to screw in flush when the pool cover is not in use, and be unscrewed when the Safety Cover is to be installed. This option provides a superior level of fit and finish, ideal for high end applications.



■ Both the **PAVER TUBE TAMPING PIN** & **WALL ANCHOR TAMPING PIN** are steel-constructed, making them less likely to bend or deform. They are specifically designed to meet the requirements of their intended applications eliminating accidents, damage, and unnecessary installation methods.



■ The **STRAP HOLD DOWN COLLAR** is designed for elevated spa and deck applications, and is used to divert the strap from a vertical orientation to a horizontal direction. This diversion eliminates the need for longer tails that angle down to the main deck level, reducing tripping hazards.



■ **SMALL (5") D-RING SPRING**, the **STANDARD (8") D-RING SPRING**, and **HD (HEAVY DUTY) D-RING SPRING** - each spring is made from sturdy, stainless steel. The attached D-Ring makes for easy adjustments and is used to secure the Safety Cover straps to the anchoring system.



■ Tired of Losing Your Spring Covers? All GLI springs come with GLI's locking toggle to prevent the spring cover from slipping off during cover application and removal.



■ **COVER DOCTORS PATCH KITS** are perfect for quick, at-home application. These Safety Cover patch kits are designed to cover holes and tears smaller than 3". Each kit comes with one 8.5" x 11" self-adhesive sheet for easy application and do-it-yourself sizing.



■ The **9" PAVER TUBES** are ideal for loose-fitting patio pavers, while the **18" LAWN TUBES** ensure your Safety Cover is an ASTM Certified installation when decking is not available. Both come with the brass anchor pre-installed.

Expert projects deserve expert solutions. GLI provides superior service, technical support, and craftsmanship that you have come to trust.

THAT'S RIGHT. WE DO COMMERCIAL!

■ Did you know GLI is one of the leading designers and producers of commercial safety covers? Take advantage of our comprehensive suite of design services, product creativity, and technical sales expertise for onsite measuring and installation options to guarantee the best possible experience. Commercial application projects start at 2500 sq. ft. and above.

Cover
Doctors®
GLI Pool Products
Specializing in Repair and Replacement Safety Covers

The *Cover* Doctor is **in**

CHECK UP TIME IS *NOW!*

Let the repair and replacement SPECIALISTS at GLI Pool Products diagnose ANY BRAND* Safety Cover today! Our "painless" Cover Doctors program will provide diagnostic services in 3 easy steps:

1. GLI will provide a box to return your cover for template replacement at NO CHARGE!
2. GLI will provide all necessary shipping labels to return your cover FREIGHT PREPAID!
3. Back at GLI, all covers will go through a 20 point inspection process to ASTM Standards by a qualified specialist to diagnose your cover for replacement.

*Does not include "Bungee" type covers.

As Always, GLI offers the fastest turnaround times on new covers and templates in the industry - with no inconvenient deadlines!





BRINGING FAMILIES TOGETHER - Don't forget to pair your GLI Safety Cover with the best Inground Liner available today. An Inground Liner from GLI will not only look beautiful in your backyard, but comes with the strongest warranty in the industry! Style your backyard next summer, with a liner as unique as your home. Ask your dealer for information on a GLI Inground Liner today!



Scan this QR code to
learn more about
GLI Inground Liners.



215 SINTER COURT
YOUNGSTOWN, OHIO 44510
800-448-2343
WWW.GLIPOOLPRODUCTS.COM

VER. SAF. 23.04.01

DEALER INFORMATION: